

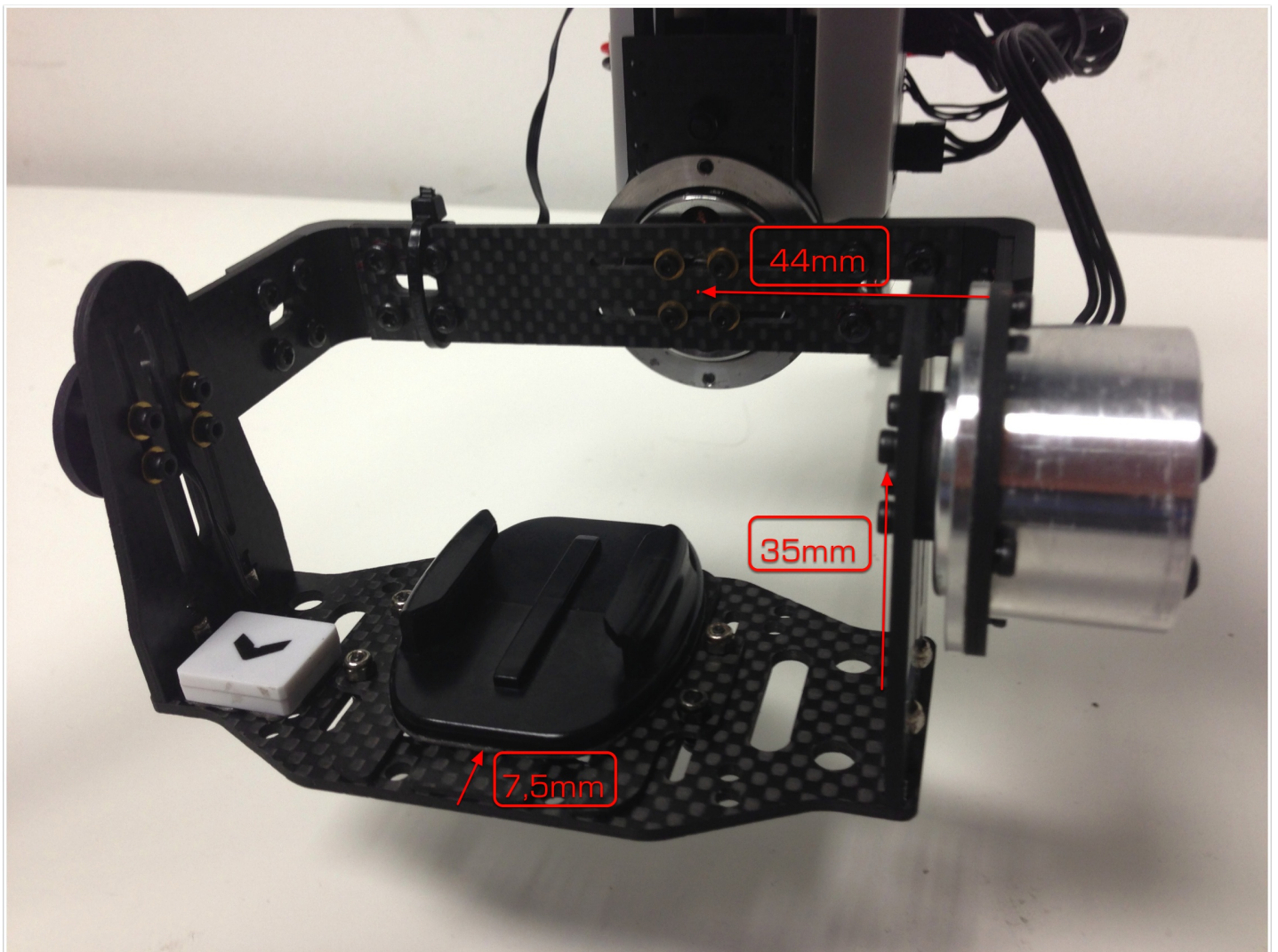
BEISPIEL: YUN-I + GOPRO3 + The Frame

YUN-I Brushless Gimbal - Beispiel Bemassung - für GOPRO3 + The Frame

Gemessen wird immer zur Achsen Mitte von der Karbon Fläche aus.

Die Angaben sind in mm und nur richtwerte !

Die Kamerabefestigung ist mittig mit dem GOPOR Klebepad fixiert.



GUI Basic

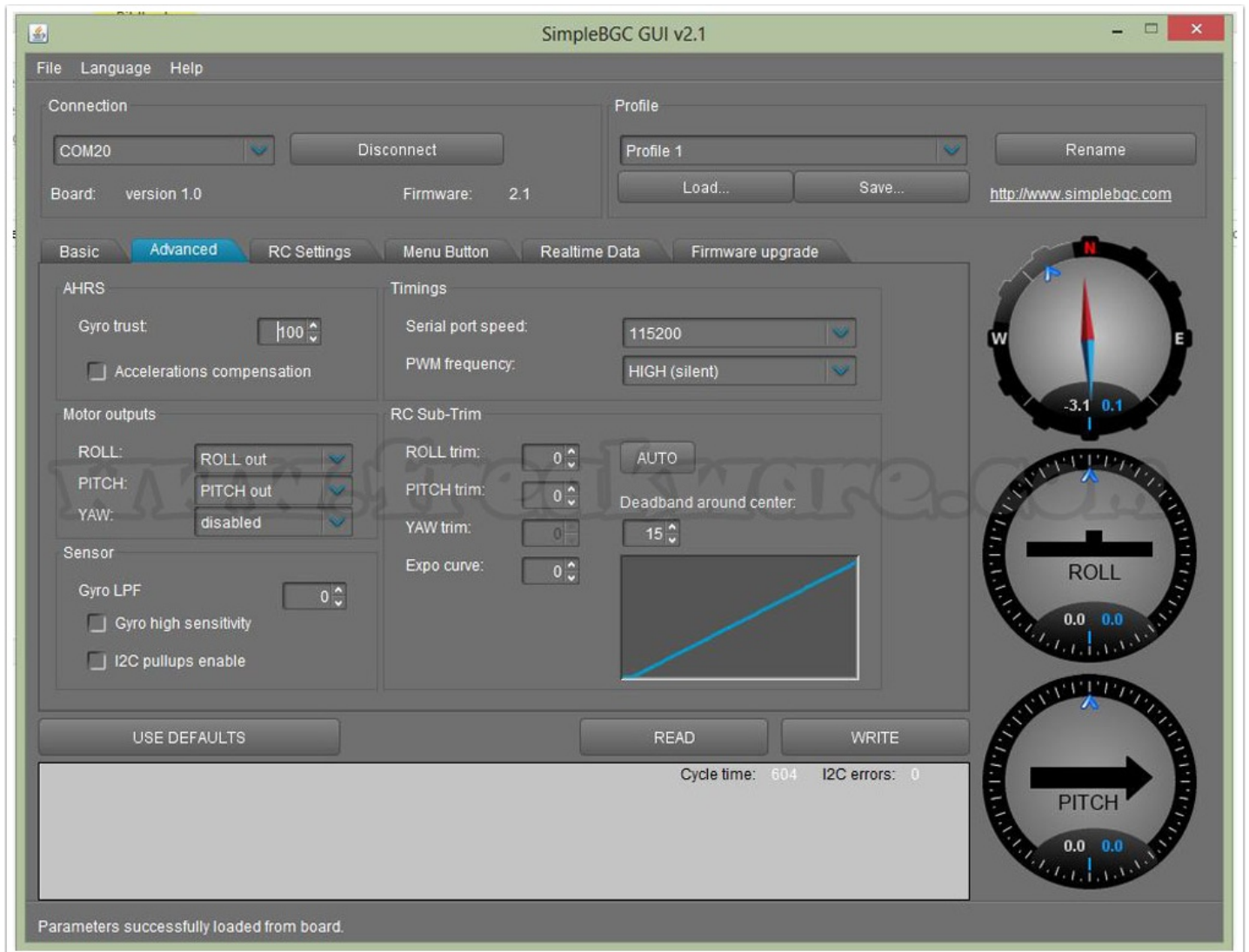
The screenshot displays the SimpleBGC GUI v2.1 interface. At the top, there is a menu bar with 'File', 'Language', and 'Help'. Below this, the 'Connection' section shows 'COM20' selected and a 'Disconnect' button. The 'Profile' section shows 'Profile 1' selected, with 'Load...' and 'Save...' buttons, and a 'Rename' button. The board information is 'Board: version 1.0' and 'Firmware: 2.1'. A URL 'http://www.simplebqc.com' is also present.

The main interface is divided into several tabs: 'Basic' (selected), 'Advanced', 'RC Settings', 'Menu Button', 'Realtime Data', and 'Firmware upgrade'. The 'Basic' tab contains the following sections:

- PID Controller:** A table of settings for Roll, Pitch, and Yaw.
- Motor Configuration:** Settings for Power, Invert, and Num. Poles for Roll, Pitch, and Yaw.
- External FC Gain:** Settings for Roll and Pitch gain.
- Sensor:** Axis configuration (Z for Top, X for Right) and calibration buttons.

On the right side, there are three circular gauges: a compass, a 'ROLL' gauge, and a 'PITCH' gauge. At the bottom, there are 'USE DEFAULTS', 'READ', and 'WRITE' buttons. A status bar shows 'Cycle time: 612' and 'I2C errors: 0'. A message box at the bottom left states 'Parameters successfully loaded from board.' and a note says 'PIDs are the most important settings. Refer to the reference manual for detailed tuning information.'

GUI Advanced



GUI RC Settings

SimpleBGC GUI v2.1

File Language Help

Connection: COM20 Disconnect

Profile: Profile 1 Rename

Board: version 1.0 Firmware: 2.1 Load... Save... <http://www.simplebgc.com>

Basic Advanced **RC Settings** Menu Button Realtime Data Firmware upgrade

RC Input Mapping

SOURCE: PWM Analog PPM-Sum

ROLL: no input -

PITCH: no input -

YAW: no input -

CMD: no input -

Command Assignment

LOW: no action

MID: no action

HIGH: no action

RC Control

	MIN ANGLE	MAX ANGLE	ANGLE MODE	LPF	SPEED MODE	SPEED	FOLLOW, %
ROLL	-45	45	<input checked="" type="radio"/>	3	<input type="radio"/>	10	0
PITCH	-45	45	<input checked="" type="radio"/>	3	<input type="radio"/>	10	0
YAW	-45	45	<input checked="" type="radio"/>	3	<input type="radio"/>	10	0

USE DEFAULTS READ WRITE

Cycle time: 615 I2C errors: 0

Parameters successfully loaded from board.

Compass: -4.1 0.0

ROLL: 0.0 0.0

PITCH: 0.0 0.2

YUN-I + GOPRO3 + The Frame



YUN-I + GOPRO3 + The Frame

