

# TREX 700 NITRO ELECTRONIC CONVERSION KIT INSTALLATION INSTRUCTIONS

## **TOOLS REQUIRED:**

4.5 mm Drill Bit (or equivalent ANSI #16 drill bit)

Manual or Power Drill

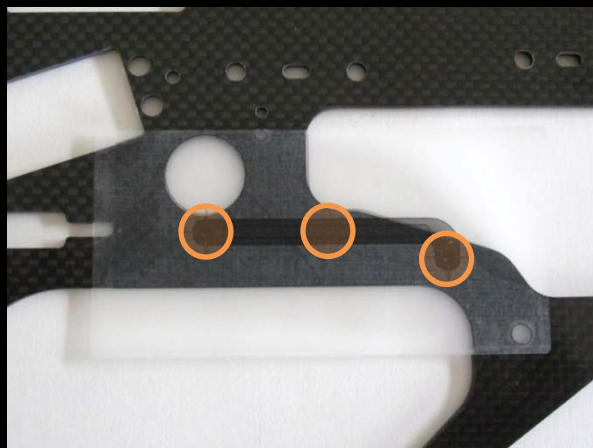
Motor Mount Installation Adhesive Diagrams (supplied with kit)



Drill the four orange-highlighted holes to 4.5 mm diameter using the required drill bit and a manual and/or power drill.

Attach the Motor Mount Installation Adhesive Diagram to the frame (left and right sides provided for corresponding frame pieces).

Drill the three Motor Mount hole locations (previous M3 mount editions have two locations) to 4.5 mm diameter as directed by the orange crosshairs shown on the Adhesive Diagram.



KDEDirect



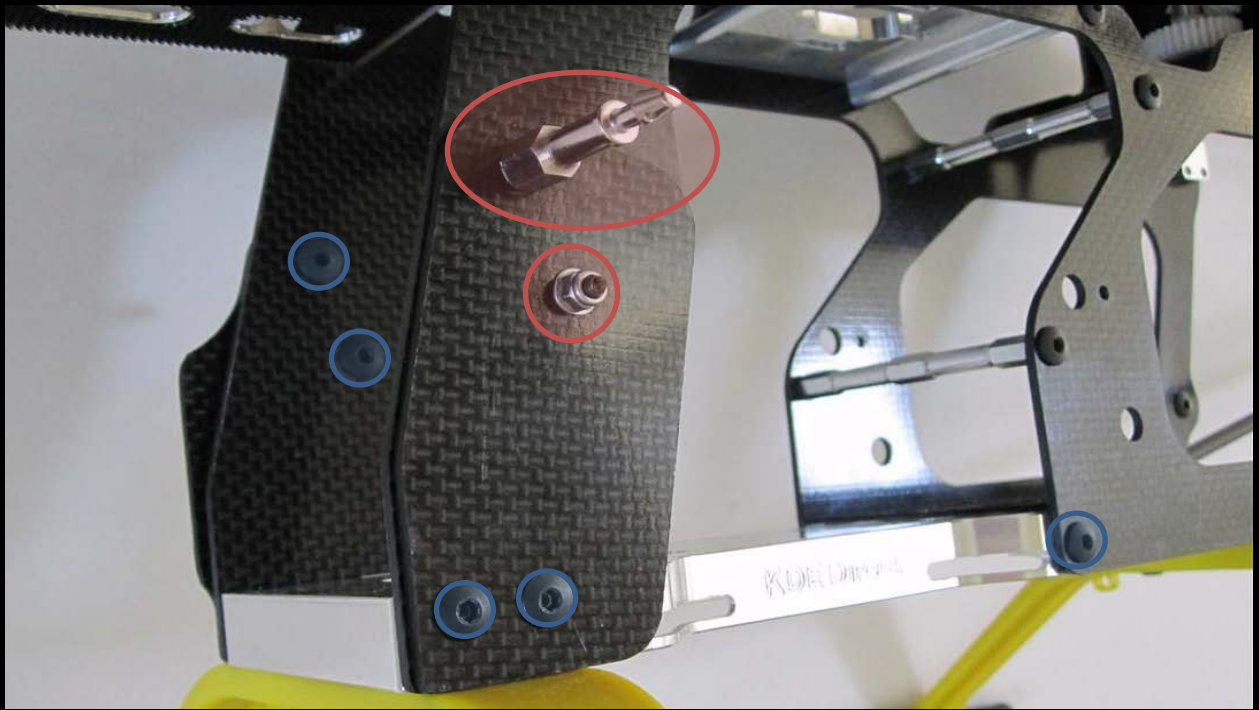
# TREX 700 NITRO ELECTRONIC CONVERSION KIT INSTALLATION INSTRUCTIONS

## **PARTS REQUIRED:**

*M3 x 0.5 x 8 mm Socket Button Head Collar Screws (included in original T700N kit)*

*M3 Flat Washers (supplied with kit)*

*M3 x 0.5 Locknuts (supplied with kit)*



Install the M3 x 0.5 x 8 mm Socket Button Head Collar Screws to the blue-highlighted locations (installation repeated on opposite side of frame).

Install the M3 Flat Washer, M3 x 0.5 Locknut, and the original Canopy Mounting Bolt to the red-highlighted locations.



**KDE**Direct



# TREX 700 NITRO ELECTRONIC CONVERSION KIT INSTALLATION INSTRUCTIONS

## **PARTS REQUIRED:**

*M3 x 0.5 x 8 mm Socket Button Head Collar Screws (included in original T700N kit)*

*M2.5 x 0.45 x 14 mm Button Head Socket Head Cap Screws (supplied with kit)*

*M2.6 x 14 mm Button Head Self-Tapping Screws (included in original T700N kit)*



Install the M3 x 0.5 x 8 mm Socket Button Head Collar Screws to the blue-highlighted locations (center location included in latest production M3/M4 Motor Mounts).

Install the servos to the frame components using the M2.5 x 0.45 x 14 mm Button Head Socket Head Cap Screws to the yellow-highlighted locations. The stock, self-tapping M2.6 x 14 mm screws are used for the plastic, threaded-hole locations (example: orange-highlighted locations shown in the figure below).



# TREX 700 NITRO ELECTRONIC CONVERSION KIT INSTALLATION INSTRUCTIONS

## **PARTS REQUIRED:**

- M3 x 0.5 x 8 mm Socket Button Head Collar Screws (included in original T700N kit)*
- M3 Flat Washers (supplied with kit)*
- M3 x 0.5 Locknuts (supplied with kit)*
- M4 x 0.7 x 20 mm Socket Head Cap Screws (supplied with kit)*
- M4 Wide Flat Washers (included in original T700N kit)*
- M4 Flat Washers (supplied with kit)*



Install the M3 x 0.5 x 8 mm Socket Button Head Collar Screws to the blue-highlighted locations.

Install the M3 Flat Washer and M3 x 0.5 Locknut to the red-highlighted location, which will secure the frame to the original carbon braces.

Install the original Tail Boom Brace to the green-highlighted location with the following fasteners in sequential order:

- 1. M4 x 0.7 x 20 mm Socket Head Cap Screw*
- 2. M4 Wide Flat Washer*
- 3. Tail Boom Brace Plastic Mount*
- 4. M4 Flat Washer (x2, double-stacked for ~2.0 mm spacing)*
- 5. Carbon Fiber Frame Brace*
- 6. Carbon Fiber Main Frame*
- 7. Aluminum Bottom Bracket Upgrade (rear M4 tapped hole location)*



# TREX 700 NITRO ELECTRONIC CONVERSION KIT INSTALLATION INSTRUCTIONS



Install the landing gear using the original T700N components (refer to the stock T700N manual if needed).

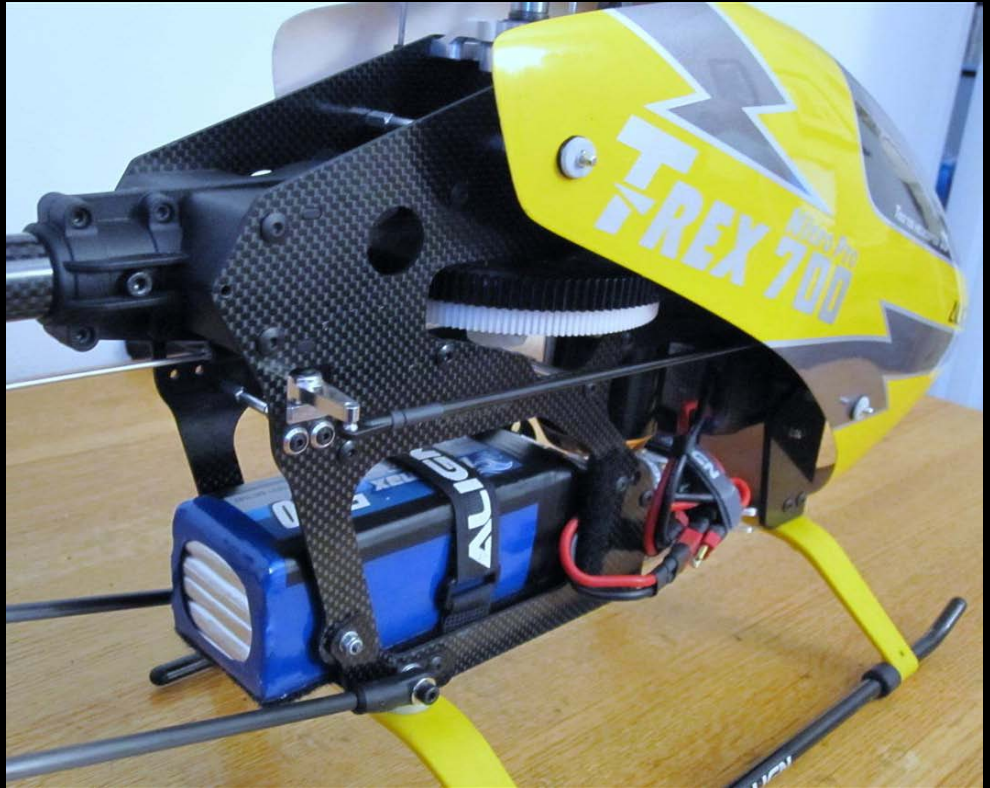
Repeat all steps for the opposite Carbon Fiber Main Frame side and tighten all fasteners (apply Loctite 242 to all fasteners during installation to prevent loosening during flight).



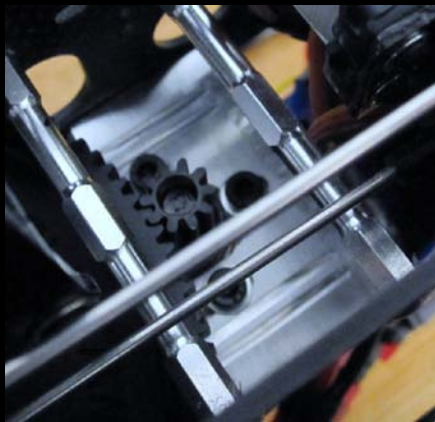
KDEDirect



# TREX 700 NITRO ELECTRONIC CONVERSION KIT INSTALLATION INSTRUCTIONS



*The installation has been completed! Enjoy your new T-Rex 700 Electric and thanks again for supporting the KDE Direct brand! Make sure to check the KDE Direct website ([www.kdedirect.com](http://www.kdedirect.com)) for newly released upgrades and additions to your T-Rex 700 Electronic Conversion (Motor Mounts, Pinion Supports, and more).*



KDEDirect



[www.KDEDirect.com](http://www.KDEDirect.com)